

BIG BOX / GROCERY OPPORTUNITY

1051 MEISTER ROAD, LORAIN, OHIO 44052

49,636 SF FOR LEASE

FORMER GROCERY STORE ANCHOR

Lorain Plaza

SALLY BEAUTY

DOLLAR TREE



T Mobile

OBERLIN AVE - 10,346 VPD

MEISTER RD - 4,052 VPD

49,636 SF GROCERY ANCHOR
OPPORTUNITY IN LORAIN PLAZA!

Joseph W. Khouri
Senior Vice President
216 658 6453
joseph.khouri@cbre.com

Connor Ambrose
Associate
216 535 4730
connor.ambrose@cbre.com

CBRE

THE OPPORTUNITY

- Former 49,636 SF Apples Grocery store available For Lease in Lorain Plaza
- Apples closed in October 2025 after 20+ years of operation
- Box Dimensions:
 - » Frontage: 277' ft
 - » Depth: 175' ft
- Ceiling Heights: 19'-3/8" floor to top of bar joist
- The box features three loading docks with additional garage door on the east side of building
- New roof in 2020 with a full warranty on certain components
- Oberlin Ave carries traffic counts of 10,346 VPD (Source: ODOT TIMS)
- Meister Rd carries traffic counts of 4,052 VPD (Source: ODOT TIMS)
- Dense Population: Population is over 15,000 within 1 mile radius, with average household incomes in excess of \$70,000 within 1 mile, with over 60,000 in population within 3 miles.



CONTACT:

Joseph W. Khouri
Senior Vice President
216 658 6453
joseph.khouri@cbre.com

Connor Ambrose
Associate
216 535 4730
connor.ambrose@cbre.com

QUICK STATS - 5 MILE RADIUS



DAYTIME
POPULATION

87,356



2025
POPULATION

100,465



2025
HOUSEHOLDS

42,094



2025
POPULATION
25 & OVER

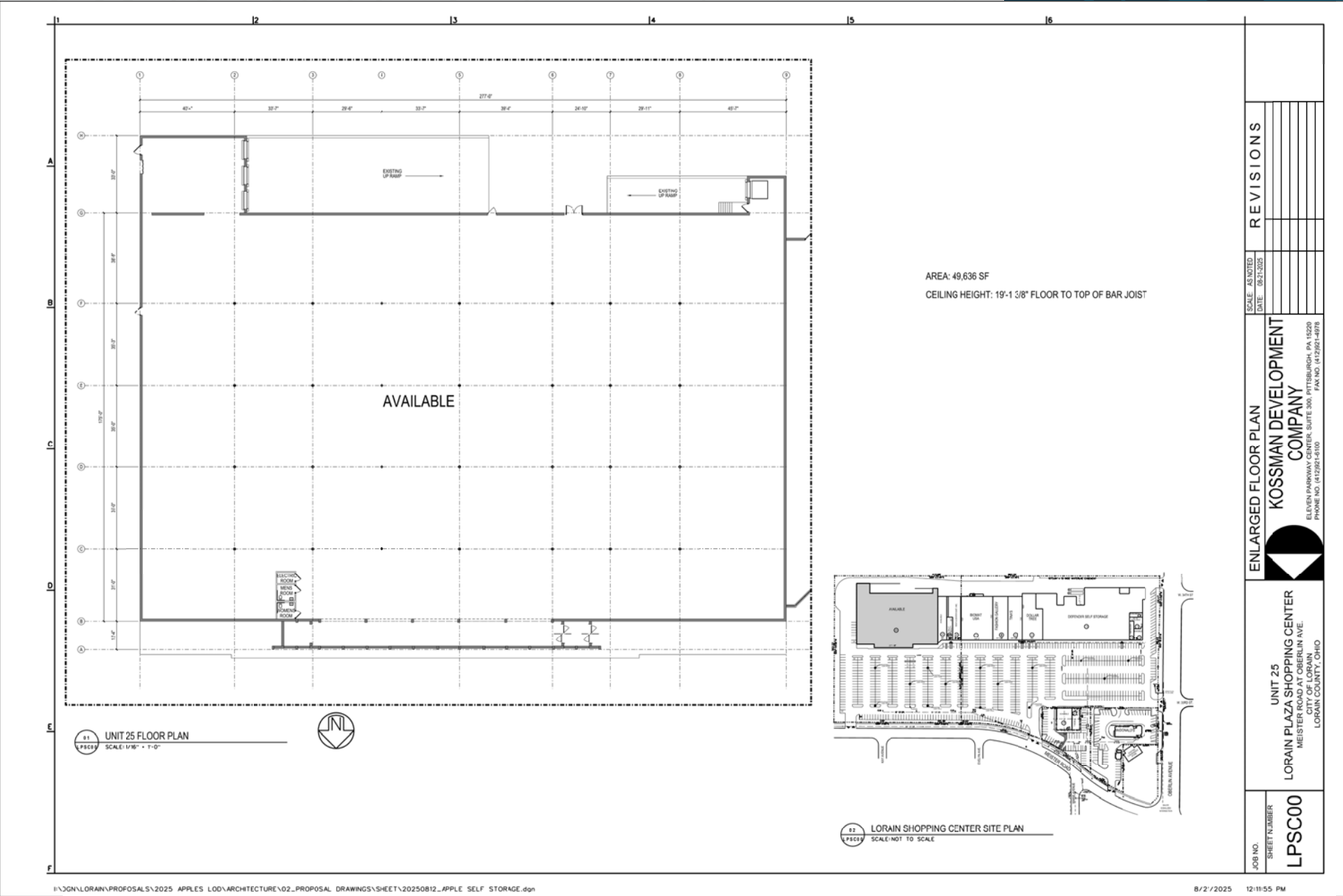
69,963



2025
AVG. HOUSEHOLD
INCOME

\$81,918

FLOOR PLAN (LOD - LANDLORD OUTLINE DRAWING)





AERIAL VIEW

FORMER GROCERY STORE ANCHOR

Lorain Plaza
SALLY BEAUTY
DOLLAR TREE

TACO BELL

Walmart



OBERLIN AVE - 10,346 VPD

T Mobile

McDonald's

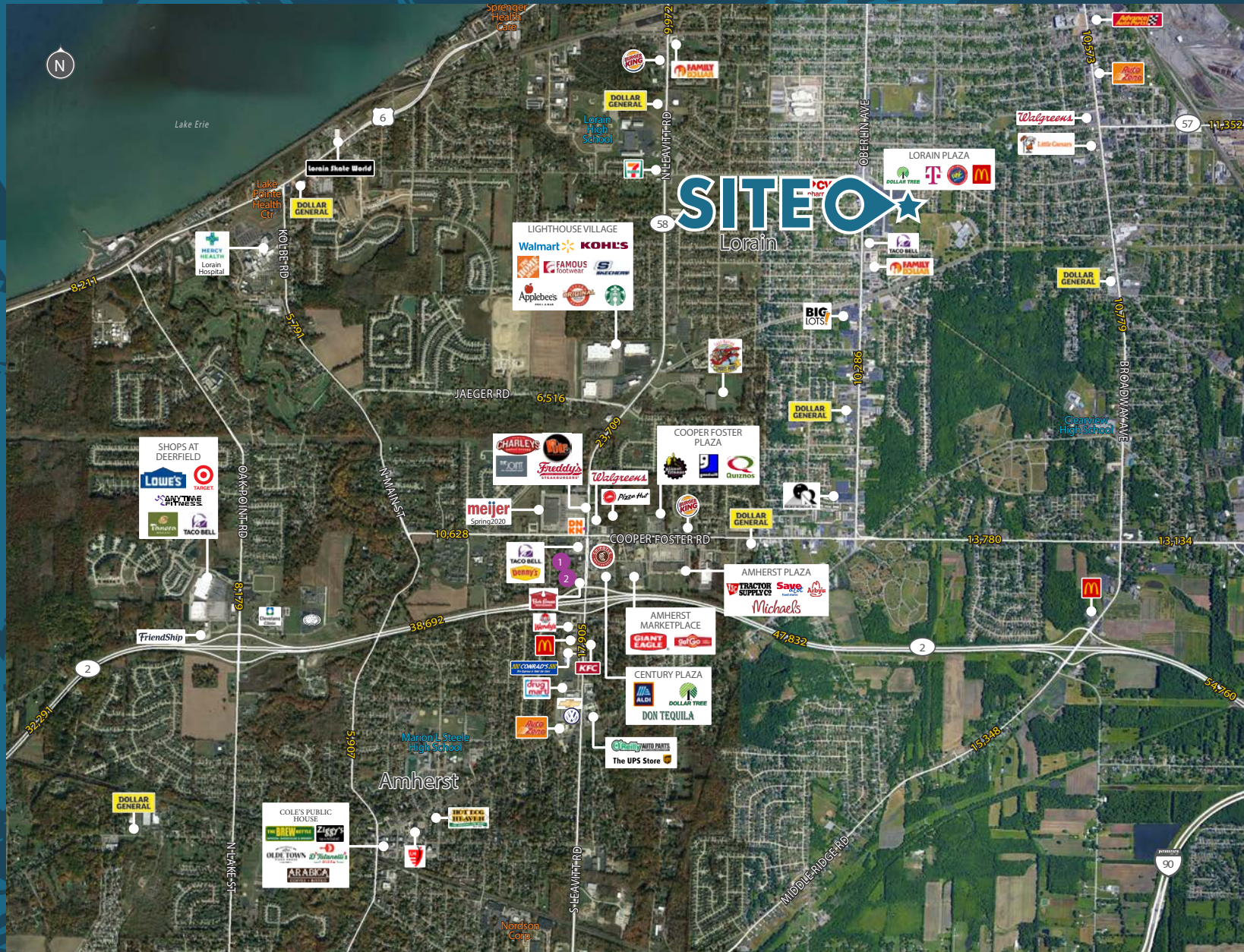
CVS pharmacy

MEISTER RD - 4,052 VPD



CBRE

RETAIL TRADE AREA



LORAIN-AMHERST RETAIL TRADE AREA

TRADE AREA INFO

Cooper Foster Park Road &
North Leavitt Road
(3 Miles)

- Population: 53,668
- Daytime Population: 45,317
- Total Households: 21,805
- Average HH Income: \$63,169
- Total Businesses: 1,221
- Total Employees: 16,141

HOTELS

2 Hotels/196 Rooms

1. Days Inn - 80
2. Motel 6 - 116

MAJOR EMPLOYERS

1. Mercy Health Lorain Hospital - 1,525
2. Nordson Corporation - 400
3. Lake Pointe Health Center - 200
4. Sprenger Health Care - 175
5. Nelson Stud Welding, Inc. - 150
6. Republic Steel - N/A

© 2024 CBRE, Inc. All rights reserved. This information has been obtained from sources believed reliable, but has not been verified for accuracy or completeness. You should conduct a careful, independent investigation of the property and verify all information. Any reliance on this information is solely at your own risk. CBRE and the CBRE logo are service marks of CBRE, Inc. All other marks displayed on this document are the property of their respective owners, and the use of such logos does not imply any affiliation with or endorsement of CBRE.
Licensed Real Estate Broker

Updated: December 18, 2025

CBRE

DEMOGRAPHICS

	1 Mile	3 Miles	5 Miles
2025 Population - Current Year Estimate	13,656	62,039	100,465
2030 Population - 5 Year Projection	13,784	62,796	101,655
2025 Daytime Population	10,461	54,096	87,356
2025 Households - Current Year Estimate	5,711	25,890	42,094
2025 Average Household Income	\$70,944	\$70,192	\$81,918
2030 Average Household Income Projection	\$78,580	\$77,490	\$91,572
2025 Median Household Income	\$57,046	\$53,202	\$59,585
2025 Population 25 and Over	9,177	42,350	69,963

EXCLUSIVE CONTACTS:

Joseph W. Khouri
Senior Vice President
216 658 6453
vince.mingo@cbre.com

Connor Ambrose
Associate
216 535 4730
connor.ambrose@cbre.com

© 2025 CBRE, Inc. All rights reserved. This information has been obtained from sources believed reliable, but has not been verified for accuracy or completeness. You should conduct a careful, independent investigation of the property and verify all information. Any reliance on this information is solely at your own risk. CBRE and the CBRE logo are service marks of CBRE, Inc. All other marks displayed on this document are the property of their respective owners, and the use of such logos does not imply any affiliation with or endorsement of CBRE. Photos herein are the property of their respective owners. Use of these images without the express written consent of the owner is prohibited. Licensed Real Estate Broker.

CBRE