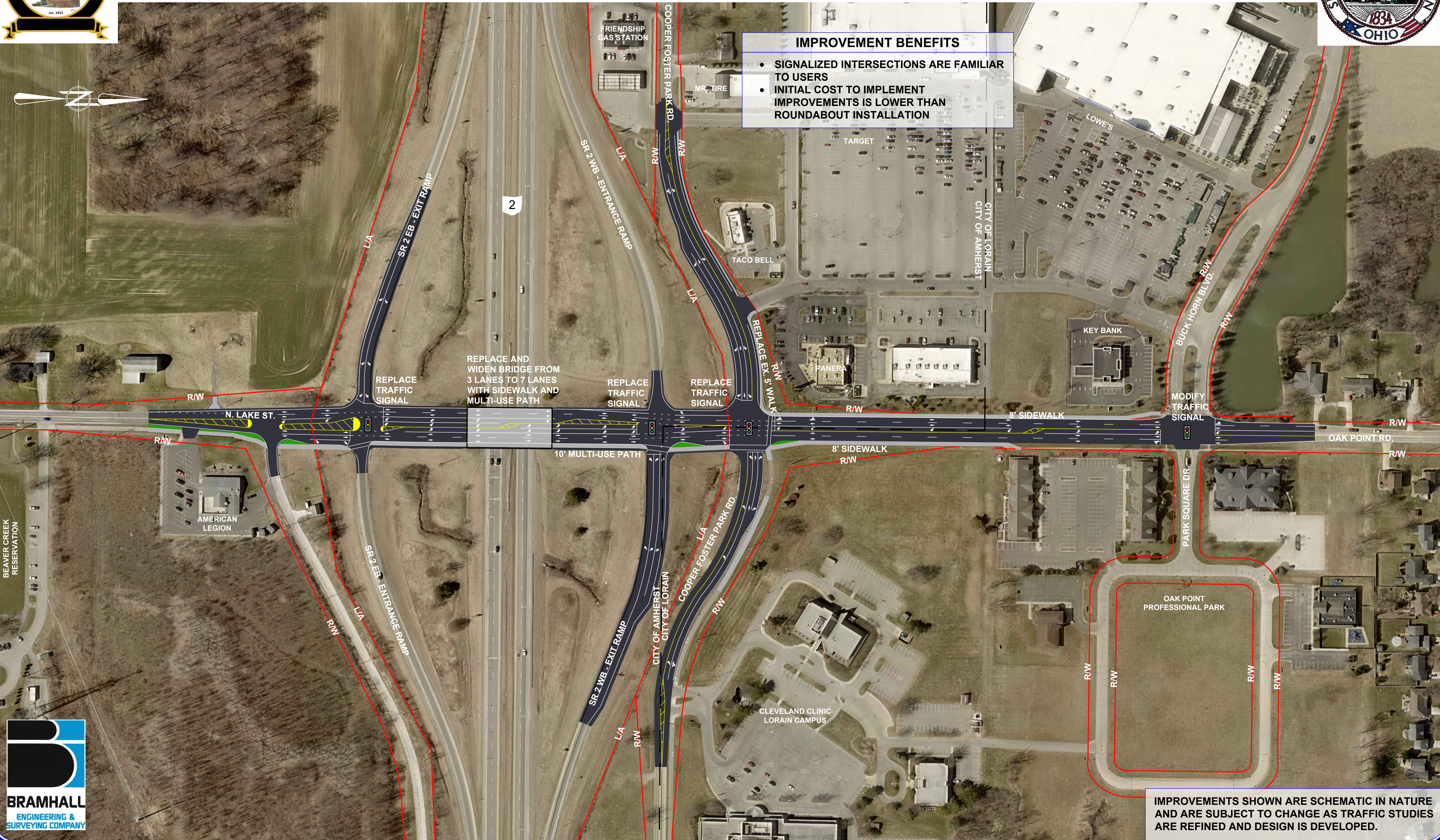


# LORAIN/AMHERST WESTERN GATEWAY IMPROVEMENTS

## SIGNAL CONTROL AT INTERSECTIONS



IMPROVEMENTS SHOWN ARE SCHEMATIC IN NATURE AND ARE SUBJECT TO CHANGE AS TRAFFIC STUDIES ARE REFINED AND DESIGN IS DEVELOPED.